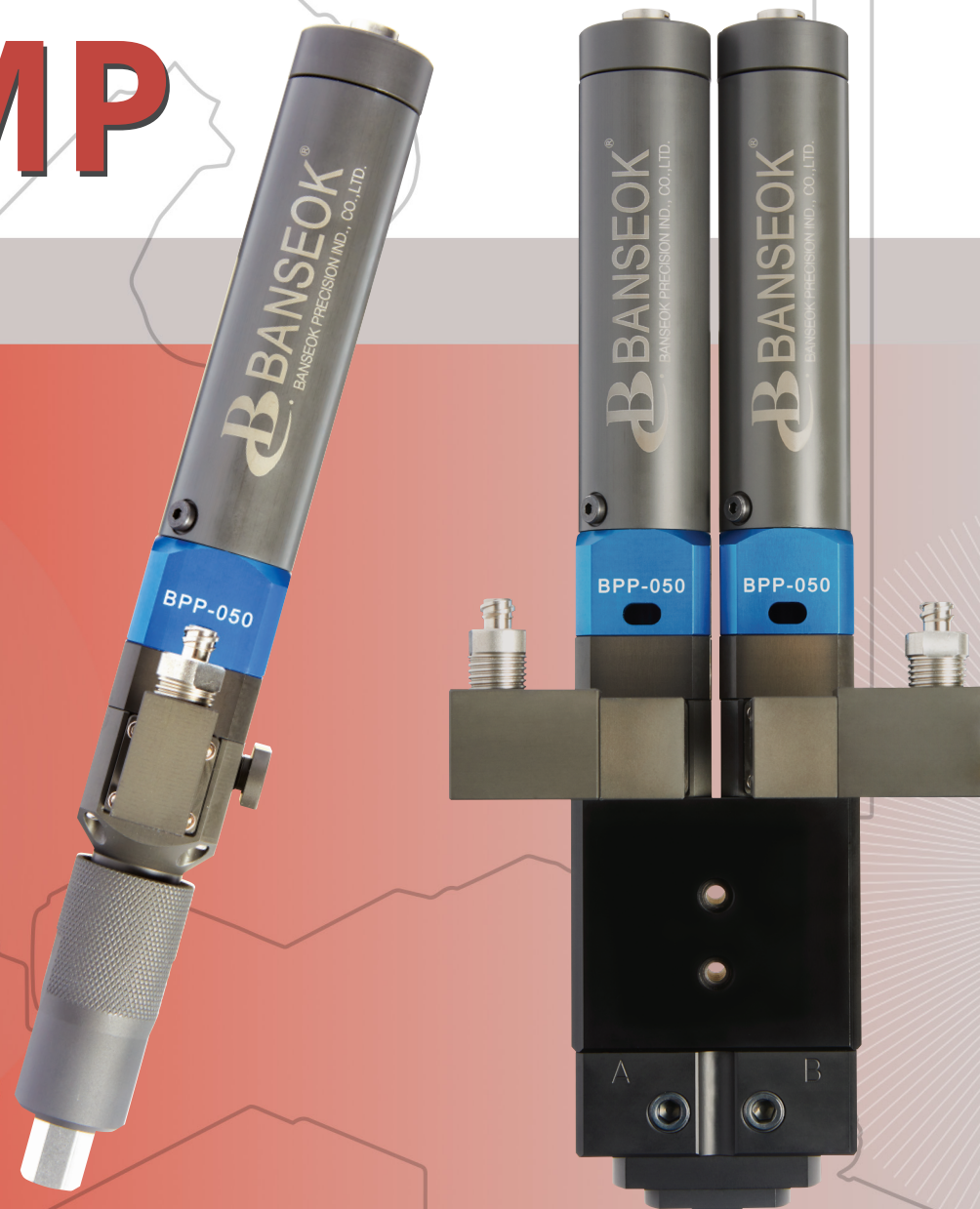


# PROGRESSIVE CAVITY PUMP



## SMART PROGRESSIVE CAVITY PUMP



BPP-050



BPP-100



BPP-500



BPP-1000

### Dispensing error rate of less than 1%

- Banseok Smart PC Pump is a volumetric dispensing pump with dispensing error rate of less than 1% using a stator and a rotor.
- With the Motor Pulse Control and Suck Back functions, fluids of various viscosity up to 100,000 cps can be controlled with its own controller and pump without remaining pressure after dispensing.

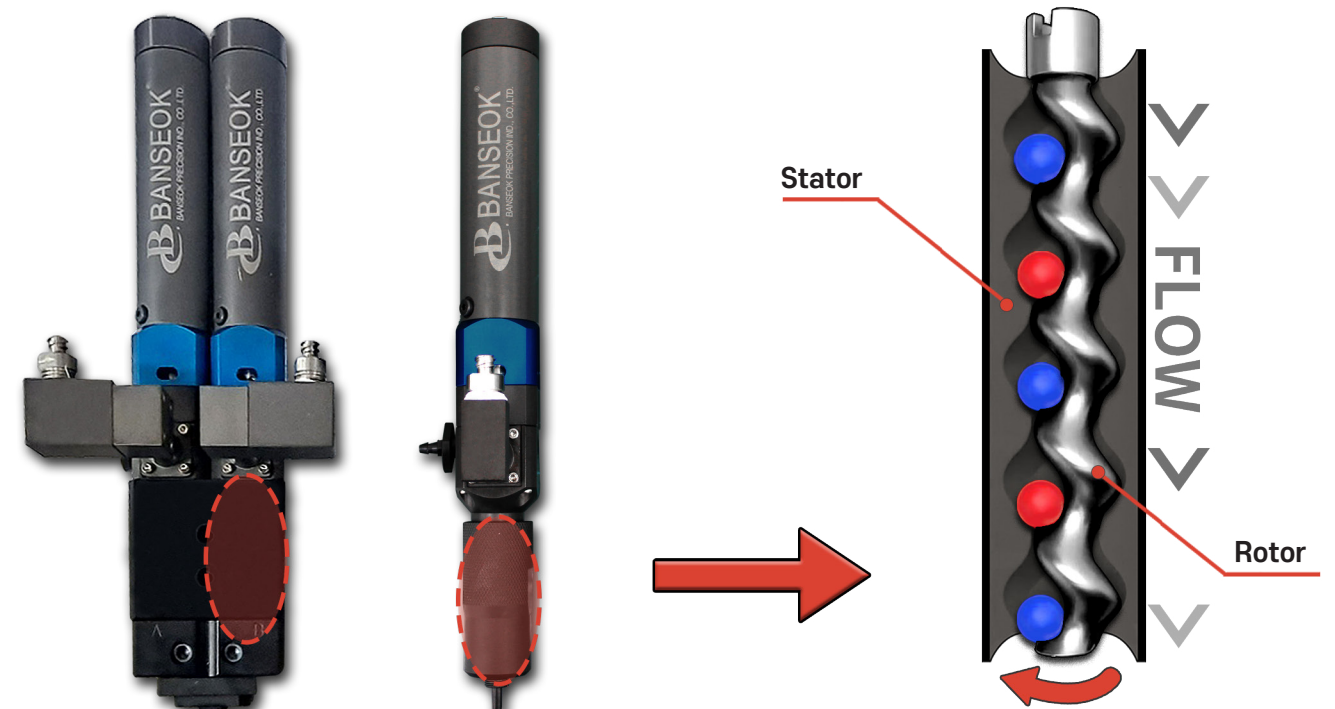
### BP-2 Controller



The controller which controls the motor connected to the Rotor. It controls the motor speed to maximum 120rpm for the both shot and suck back function. With the Real&Time mode, ON/OFF control or time setting control are available.

## ENDLESS PISTON PRINCIPLE

Banseok PC Pump are based on a completely pressure tight displacement system, which is self-sealing and consists of a rotor and stator. The controlled motor enables a constant volume to be conveyed proportionally to the angle per revolution.



## 1K SMART PC PUMP

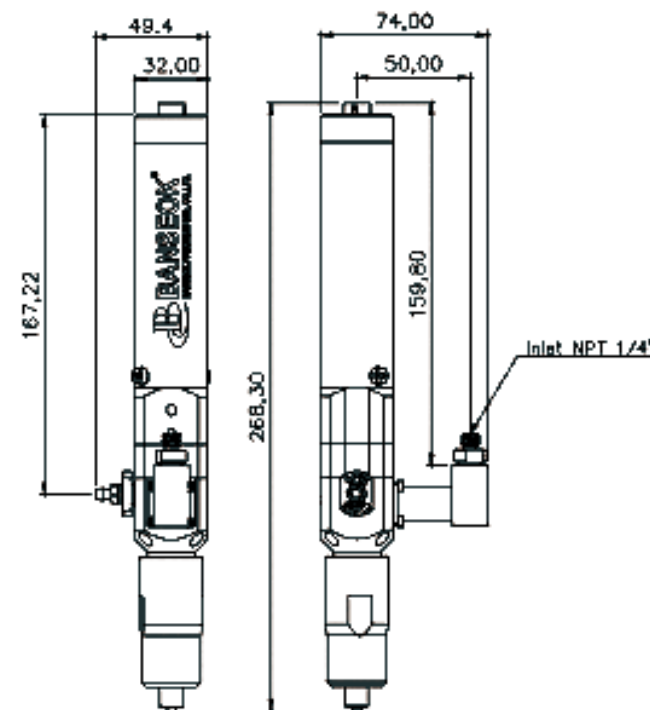


### MAIN FUNCTIONS & BENEFITS

- Applicable to fluid with various viscosity up to MAX 100,000cps.
- Disassembly and assembly are simple.
- Precise dispensing using Motor Pulse Control.
- Providing solution of Dead-Volume(remaining pressure) using Suck-Back function, with no Dropping phenomenon.
- Dispensing Control of 1% error rate, applicable to various industrial fields.

## SPECIFICATION

Model	BPP-050	BPP-500
Dispensing Volume(60rpm/sec)	≈0.05ml	≈0.5ml
Motor Speed	1~120rpm	1~120rpm
Accuracy	±1%	±1%
Input Air Pressure	0~6kgf/cm <sup>2</sup>	0~6kgf/cm <sup>2</sup>
Material of Stator	FFKM	FFKM
Material of Motor	Stainless Steel	Stainless Steel
Inlet Port	G 1/4"(STD)	G 1/4"(STD)
Outlet Port	Luer Lock	Luer Lock
Wetting Part Material	SUS / UHMW-PE	SUS / UHMW-PE
Weight	540g	540g
Operating Condition	10~40°C	10~40°C



## 2K SMART PC PUMP



### MAIN FUNCTIONS & BENEFITS

- Applicable to fluid with various viscosity up to MAX 100,000cps.
- Disassembly and assembly are simple.
- Precise dispensing using Motor Pulse Control.
- Dispensable with various mixing ratio from 1 : 1 to 1 : 100 of different fluid types.
- By minimizing additional components, it is possible to freely convert from 1K type to 2K type and from 2K type to 1K type.

## SPECIFICATION

Model	BPP-100	BPP-1000
Dispensing Volume(60rpm/sec)	≈0.1ml	≈1ml
Motor Speed	1~120rpm	1~120rpm
Accuracy	±1%	±1%
Input Air Pressure	0~6kgf/cm <sup>2</sup>	0~6kgf/cm <sup>2</sup>
Material of Stator	FFKM	FFKM
Material of Motor	Stainless Steel	Stainless Steel
Inlet Port	G 1/4"(STD)	G 1/4"(STD)
Outlet Port	Luer Lock	Luer Lock
Wetting Part Material	SUS / UHMW-PE	SUS / UHMW-PE
Weight	1.6kg	1.6kg
Operating Condition	10~40°C	10~40°C

